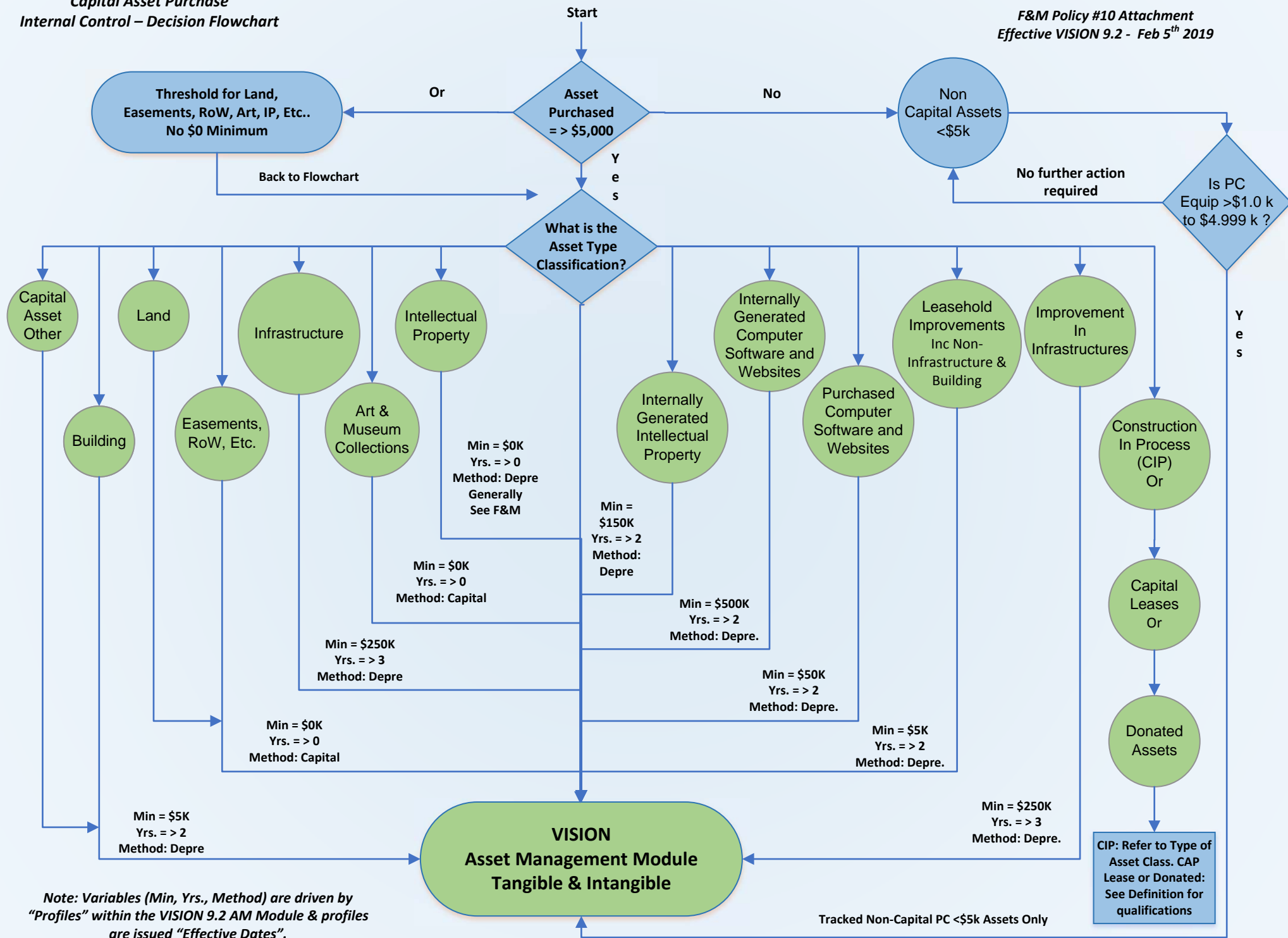


State of Vermont
 Capital Asset Purchase
 Internal Control – Decision Flowchart

Dept of Finance and Management
 Statewide Accounting & Statewide Reporting
 F&M Policy #10 Attachment
 Effective VISION 9.2 - Feb 5th 2019



Note: Variables (Min, Yrs., Method) are driven by "Profiles" within the VISION 9.2 AM Module & profiles are issued "Effective Dates".